

THE STUDIO BOOK



Julia Downs
INTERIOR DESIGN
STUDIO



THE DESIGN JOURNEY

1.

THE DISCOVERY

Exploring your style, aspirations & challenges

- **Consultation** in comfort of your home or online
- Understanding your **goals, challenges** & lifestyle needs
- A tailored report with **recommendations** to address your priorities
- A bespoke **moodboard** with inspirational imagery and **concept** finishes to capture the **look & feel**

2.

THE BLUEPRINT

Defining layouts, flow & design direction

- **Space planning** and **layout** exploration
- **2D floorplans** with **furniture placement** and room flow
- **Indicative choices** for flooring, finishes, and lighting layouts.
- Initial **ideas** for built-in and **bespoke furniture**
- A measured site survey to ensure accuracy (optional)

3.

THE REFINEMENT

Perfecting the details & making decisions

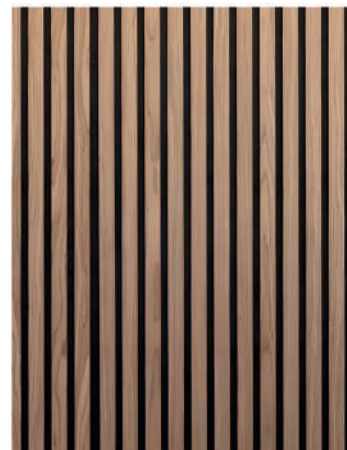
- **Confirming** colour palette and finish choices
- **Wall covering** specifications
- **Window dressing** specifying
- **Accessories** and styling elements
- Scaled **elevation drawings**
- **Specifying** fixtures, furnishings, and fittings
- **Bathroom and kitchen design**
- **Detailed drawings** for furnishings and joinery

4.

THE REVEAL

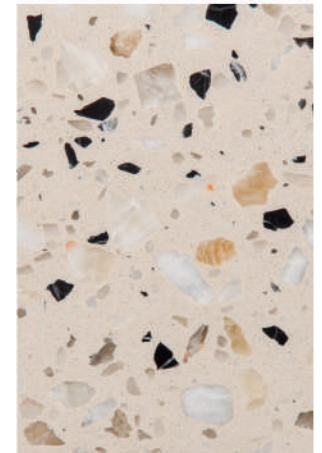
Seeing your future space come to life

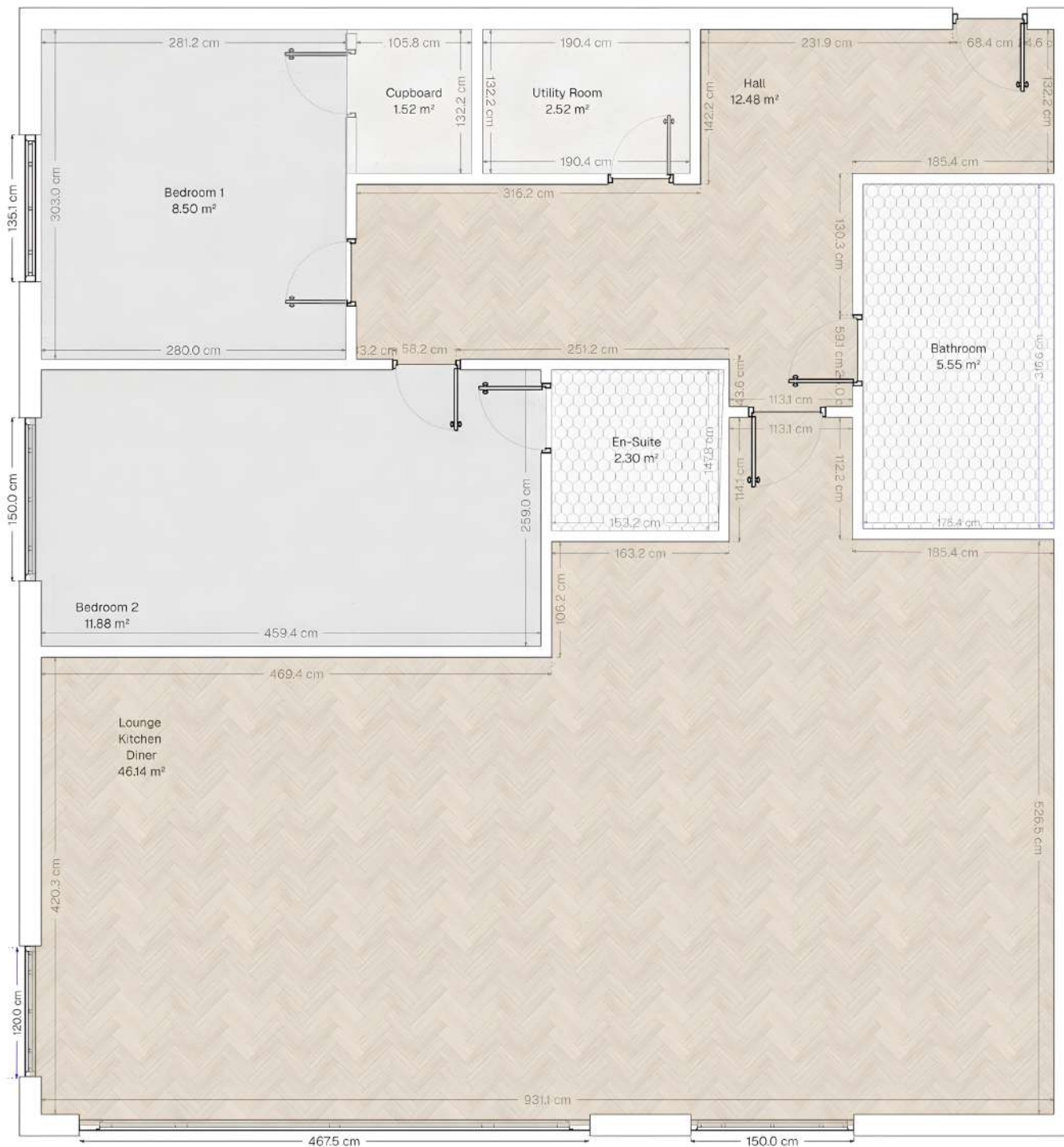
- High-quality **3D renders** of your space with **photo-realistic CGI** visuals



Look & feel ELEGANT LOUNGE

The aim is to achieve a modern-contemporary look with a warm, elegant feel, blending clean lines with natural textures for a sophisticated yet inviting atmosphere. Key materials include slatted oak panelling to add depth and warmth, herringbone wood flooring for timeless character, and soft neutral upholstery balanced with charcoal-toned accents for contrast. Terrazzo tabletops introduce a playful, modern detail, while brass lighting fixtures add a touch of understated luxury. Layered with sheer curtains, natural hides, and greenery, the overall feel is calm, refined, and welcoming.





APARTMENT DIMENSIONS

Bedroom 1: 280.0cm x 303.0cm
 Bedroom 2: 459.4cm x 259.0cm
 En-suite: 153.2cm x 147.8 cm
 Bathroom: 175.4cm x 316.6cm
 Lounge, Kitchen: 931.1cm x 526.5 cm (max dim)
 Utility Room: 190.4cm x 132.2cm
 Cupboard: 105.8cm x 132.2cm

Ceiling Height: 250cm



Company info :

Julia Downs Studio
 design@juliadownstudio.com
 07770 689764
 Sheffield, South Yorkshire

Drawing name :

Apartment Floorplan

Notes



Project : Riverdale Apartment
 Made by : Julia Downs
 Date : 08/07/2025
 Scale : 1:58
 Project No :

JDS71



FURNITURE LAYOUT

1. FLOW & CIRCULATION

The open-plan layout allows for unobstructed movement between the kitchen, dining, and living zones. Key pathways such as the route from the entryway to the kitchen, and from the bedroom to the bathroom are kept clear, avoiding cramped or awkward bottlenecks.

2. FUNCTIONAL ZONING

Living Area: Positioned in the bottom-left corner with an L-shaped sofa, this zone maximizes wall space for media storage and creates a cosy social hub.

Dining Area: Centrally located round table makes for easy access from both the kitchen and living area, enhancing the flow during meals or gatherings.

Kitchen: The island serves as a functional divider between cooking and social spaces, with seating that invites casual dining or conversation while cooking.

3. NATURAL LIGHT

The seating and dining arrangements are oriented to take advantage of window light, keeping the main social areas bright. The more private bedroom and bathroom zones are set further back, away from the strongest daylight for comfort and privacy.

4. AMPLE SPACE

Corner and wall placement of larger furniture pieces (sofa, bed, kitchen units) frees up central floor area, making the apartment feel more spacious.

Storage units are integrated into walls where possible, reducing visual clutter.

5. COMFORT & BALANCE

The arrangement creates visual harmony by balancing heavy furniture (sofa, bed) with lighter pieces (round dining table, stools). Plants and small accent pieces soften hard edges and add warmth, preventing the space from feeling too rigid.



Company info :

Julia Downs Studio
design@juliadownstudio.com
07770 689764
Sheffield, South Yorkshire

Drawing name :

Furniture Layout

Notes



Project : Riverdale Apartment
Made by : Julia Downs
Date : 08/07/2025
Scale : 1:55
Project No :

JDS72

DINING ROOM FINISHES BLUEPRINT



Company info :

Julia Downs Studio
design@juliadowns.studio
07770 689764
Sheffield, South Yorkshire

Drawing name :

Dining Room
Moodboard proposal

Notes

Light blue cushions as
pops of colour
to lighten the mood

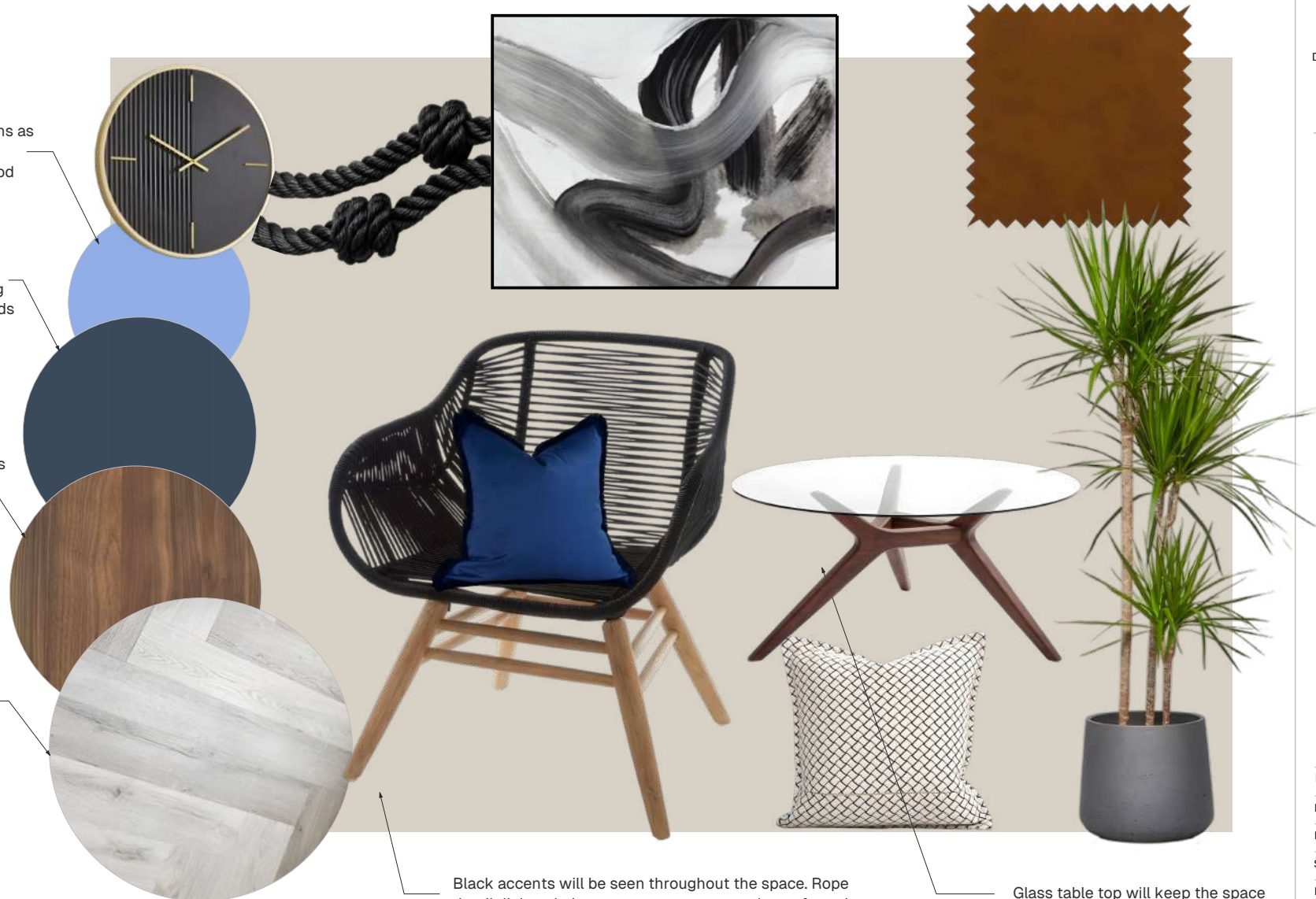
Navy blue colour in
the wooden panelling
and kitchen cupboards
is a statement of
grounded-ness and
trust.

Dark walnut wood
on kitchen cabinets
and worktop.
Practical, and
luxury at the same
time

Muted tones in the
flooring will allow
the other wooden
furniture to be the
real show-stopper.
They will not 'fight'
together.

Black accents will be seen throughout the space. Rope detail dining chairs are a contemporary twist on formal dining chairs.

Glass table top will keep the space
airy and reflect light



Project : Dore Newbuild

Made by : Julia Downs

Date : 08/07/2025

Scale : n/a

Project No :

JDS73

TV MEDIA WALL - CABINETRY DETAILS



Company info :

Julia Downs Studio
design@juliadownstudio.com
07770 689764
Sheffield, South Yorkshire

Drawing name :

TV wall - Cabinetry
details and installation

Notes

This is a plan only - all
measurements and installation
guidelines must be verified by
a contractor.

FITTING INSTRUCTIONS

To be fitted with minimal gaps at the ceiling. This is to be fitted onto a plasterboard wall. TV will be hung on a bracket and plugged into the existing socket behind accessible via one of the cabinets below. The floating cabinet and mirror are to be centered to the wall. The floating unit to be 60cm from the floor

AMPLE STORAGE

Built-in storage within a TV media unit maximises space, keeping the apartment clutter-free and organised. Sleek, integrated design maintains a streamlined look while providing ample room for everyday essentials.

FOCAL POINT

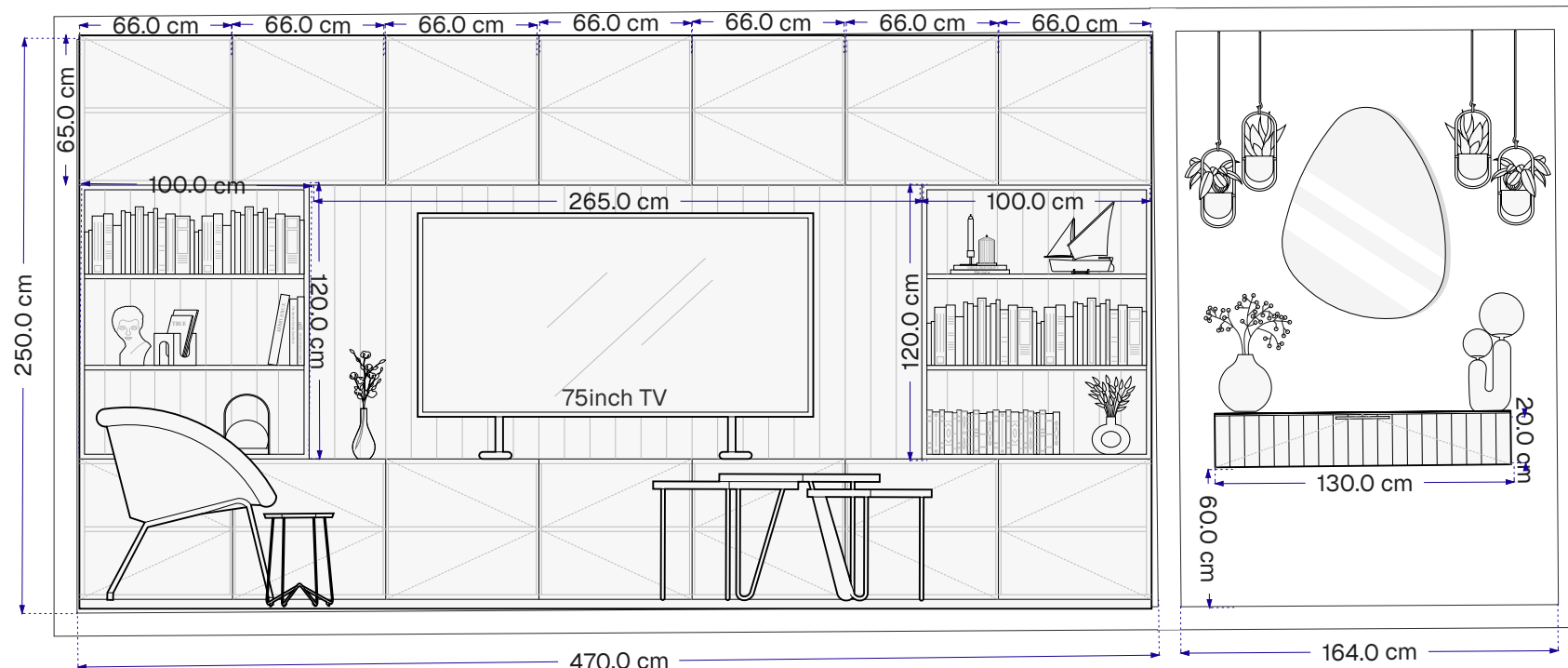
Incorporating the TV into a media wall with panelling creates a cohesive focal point that blends technology seamlessly into the design. The textured backdrop adds depth and style, elevating the space far beyond the look of a plain white wall.

STORAGE

7 cabinets (top row)
7 cabinets (bottom row)
2x shelving units with two shelves

BALANCE

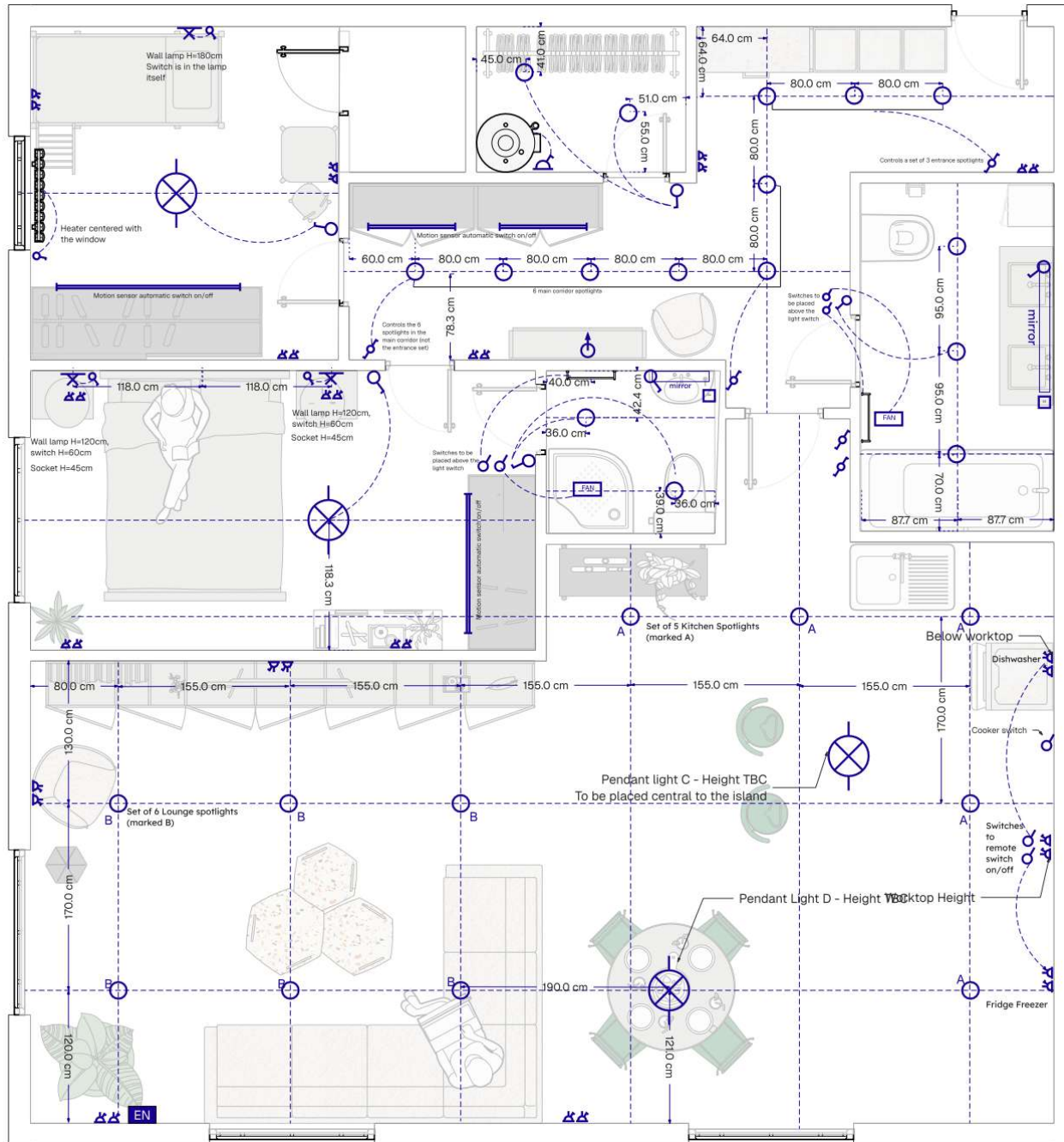
Balancing organic shapes with clean lines creates a harmonious and modern feel. The mix of hanging planters, sculptural décor, and the asymmetric mirror adds depth and personality while keeping the space airy and inviting.



Project : Riverdale
Apartment
Made by : Julia Downs
Date : 08/07/2025
Scale : 1:30
Project No :

JDS74

LIGHTING AND ELECTRICAL PLAN



Lighting & Electrical Symbols Legend	
	Switch
	Switch (general)
	Two way switch
	Twin switched socket
	Ceiling lamp
	Mirror light
	Spotlight
	Wall Lamp
	Extractor Fan
	Internet socket
	Boiler
	Guiding Lines
	Connection line
	Shaver Socket
	Accent Light



Company info :

Julia Downs Studio
design@juliadownstudio.co.uk
07770 689764
Sheffield, South Yorkshire

Drawing name :

Lighting and
Electrical Plan

Notes

Sockets to be placed 45cm from the floor.
Light switches to be placed 120cm from the floor.

Lights to be centered and placed according to the dashed guide lines.
Height of the pendant lights is to be determined on site.

Refer to Drawing no. JDS74 for the types of light fixtures.

This is a plan only - all measurements and installation guidelines must be verified by a certified electrician.



Project : Riverdale Apartment
Made by : Julia Downs
Date : 08/07/2025
Scale : 1:60
Project No :

JDS75

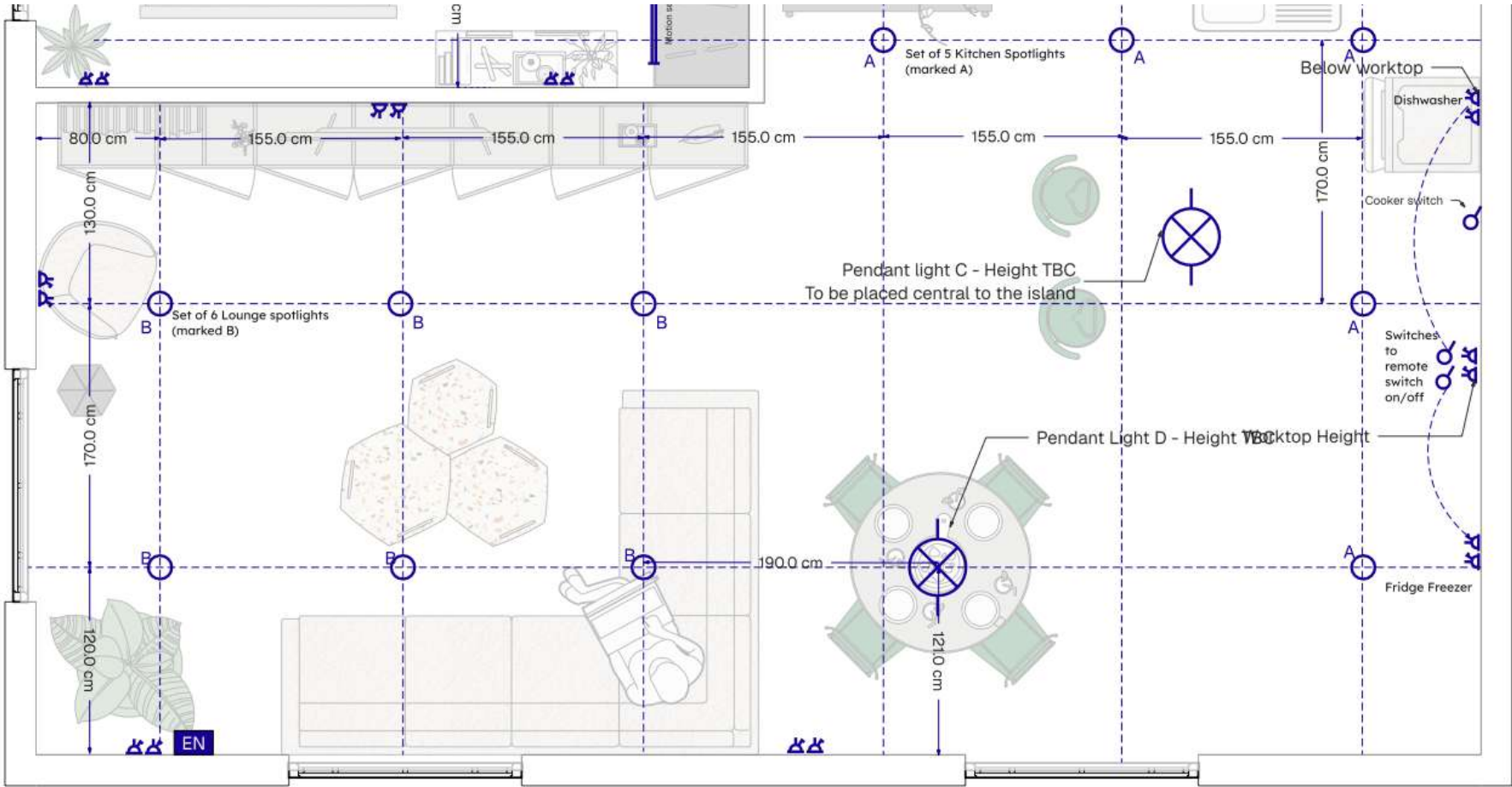
DETAIL OF LOUNGE LIGHTING



Company info :
Julia Downs Studio
design@juliadownsstudio
07770 689764
Sheffield, South Yorkshire

Drawing name :
Lounge - Zoomed in (example)

Notes
For the type of fixtures to be fitted in please refer to the details at the bottom of the page.
All fittings need to be fitted by a qualified electrician.



Pendant Light C - Bubble



Statement piece fitted above the kitchen island - centered.
Bubble - Trio - 317401079
LED energy - saving
Quantity: 1x
Price: £369.47
Total: £369.47
Type: LED

Pendant Light D - Ritus



LED board of 28W with a colour temperature of 3000K, IP20 rating. Elegant and versatile choice
To be fitted above the kitchen island - centered
Quantity: 1x
Price: £206.89
Total: £206.89
Type: GU10

Kitchen - Under cabinet light - Amon



Perfect for modern interiors, minimal and contemporary. AMON under cabinet light in silver - a single LED board of 6.20W, warm 3000K light, IP20-rated
Quantity: 5x
Price: £369.47
Total: £369.47
Type: LED

A & B downlight Minima Slimline



Sleek and minimal, anti-glare Round Fixed Fire-Rated IP65
Quantity: 11x
Price: £39.60

Lounge Lighting - Items	Qty	Price
Bubble Pendant	1	£369.47
Ritus Pendant	1	£206.89
Under Cabinet Light	5	£261.65
Minima Slimline Downlights	11	£435.60
Total		£1273.61



Project : Riverdale Apartment
Made by : Julia Downs
Date : 08/07/2025
Scale : 1:40
Project No :

JDS76

DETAILED PRODUCT SPECIFICATION



Company info :
Julia Downs Studio
design@juliadownstudio.com
07770 689764
Sheffield, South Yorkshire

Drawing name :
Detailed Product Specification

Notes



KING MODULAR SOFA - KATO

Kato modular sofa package including a corner module, two 2-seater modules and two timber shelves. Rearrange the modular components to suit your space

Media consoles and shelves are 1040mm.
Backed by the KING 25 Year Steel Frame Warranty.

Price: £5,750
Dimensions: 3120mm W



Leura Biscotti Boucle fabric
A delightful bouclé that instantly resonates with contemporary styling



BUBBLE TRIO PENDANT LIGHT

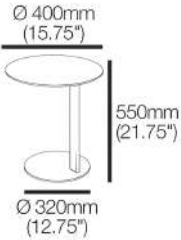
Bubble - Trio - 317401079
Price: £369.47



MYCO SIDE TABLE - KING LIVING

Minimalistic form combines with functional cantilever design

Price: £272.00



HERVÉ TERRAZZO AND METAL NESTING TABLES

The two Hervé coffee tables combine a black metal base and a terrazzo top, a mineral material made up of stone chips and cement.

Dimensions
Large
• Diameter: 70cm
• Height: 42cm

Small
• Diameter: 50cm
• Height: 37cm

Price: £649.99



Item	Qty	Price
Kato Modular Sofa - KING	1	£5,750.00
Herve Terazzo nesting tables	1	£649.99
Bubble Pendant Light	1	£369.47
Myco Side table	1	£272.00
Total		£7,041.46

Project : Riverdale Apartment
Made by : Julia Downs
Date : 08/07/2025
Scale : n/a
Project No :

ELEGANT LOUNGE VISUALISATION

3D RENDER



ELEGANT LOUNGE VISUALISATION

3D RENDER



URBAN LOUNGE VISUALISATION

3D RENDER



DINING ROOM VISUALISATION

3D RENDER



MODERN KITCHEN VISUALISATION

3D RENDER





Julia Downs Studio
07770 689 764
design@juliadownsstudio
www.juliadownsstudio
South Yorkshire & Remote

INTERIORS
FOR MODERN
LIVING

